



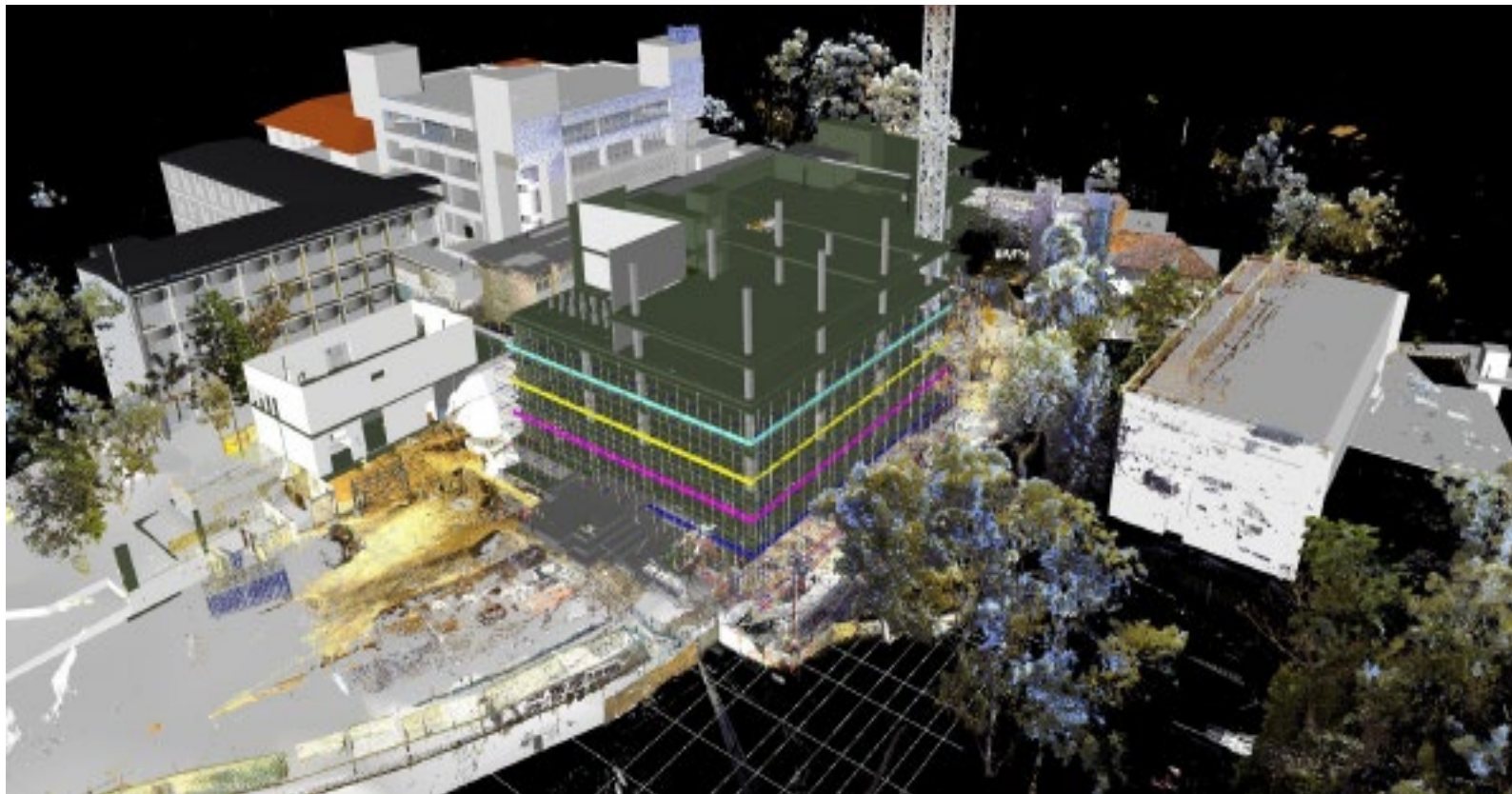
BRISBANE

CONSTRUCTION  
MODELLING

LASER SCANNING

# Acrow Formwork & Scaffolding

## SCAFFOLD FOR CONSTRUCTION SITES



### PROJECT SUMMARY

**Location:** Brisbane City

**Services:** 3D Laser Scanning, Construction Modelling

Acrow Formwork & Scaffolding engaged Hologvision 3D to assist with the design and site layout of scaffold for constructions sites.



## PROJECT CHALLENGES

The 2D drawings were used to analyse the design of the scaffolding around the building site.

The client need to preempt any clashes with the existing environment prior to construction.

Site layout of the scaffold would have to be completed manually.

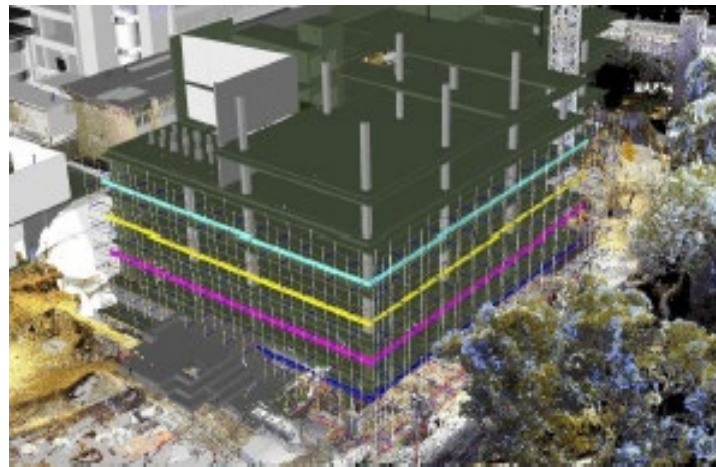
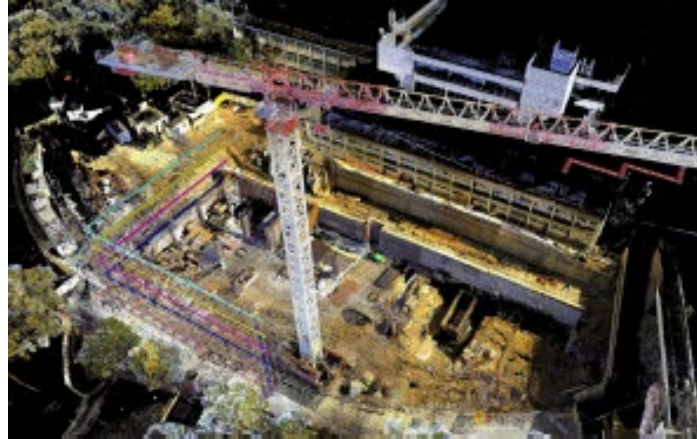
## OUR SOLUTION

Using our 3D laser scanning technology, we scanned the existing site and generated a 3D Point Cloud Model of the working environment.

The design model could then be imported into Point Cloud to determine its positioning on-site and identify any clashes between the scaffolding and the existing environment, such as power lines and the tower crane.

Once the scaffold model was approved by the client, our Robotic Total Station was used for accurate site-layout in accordance with the design.

This was to ensure that the technical scaffolds and false work supports were based out exactly prior to the structure, eliminating any rework.



## CONTACT US

PHONE (07) 3414 7400

EMAIL [info@holovision.com.au](mailto:info@holovision.com.au)

[www.holovision.com.au](http://www.holovision.com.au)

QLD | VIC | NT



## SCAN ME

